

The genus *Heteromphrale* Kröber, 1937 (Diptera; Scenopinidae) in Peru, with the description of a new species

El género *Heteromphrale* Kröber, 1937 (Diptera; Scenopinidae) en Perú, con la descripción de una especie nueva

Pável Sánchez *¹

<https://orcid.org/0000-0002-6929-2561>
sivrac1986@gmail.com

Luis F. Ramírez-Montano¹

<https://orcid.org/0000-0001-8289-0892>
ramirezlf15@gmail.com

*Corresponding author

1. Universidad Nacional Mayor de San Marcos, Museo de Historia Natural, Departamento de Entomología, Av. Arenales 1256, Apartado 14 0434, Lima, Perú.

Citación

Sánchez P, Ramírez-Montano LF. 2023. The genus *Heteromphrale* Kröber, 1937 (Diptera: Scenopinidae) in Peru, with the description of a new species. *Revista peruana de biología* 30(4): e26170 001- 006 (Diciembre 2023). doi: <https://dx.doi.org/10.15381/rpb.v30i4.26170>

Presentado: 10/09/2023

Aceptado: 20/10/2023

Publicado online: 07/12/2023

Editor: Diana Silva

Abstract

The Neotropical genus *Heteromphrale* Kröber, 1937, so far known from Argentina, Chile and Uruguay, is recorded for the first time from Peru based on the description of a new species, *Heteromphrale illapa* sp. nov. from Moquegua. An update to the key to the known species is provided, as well as a distribution map.

Resumen

El género neotropical *Heteromphrale* Kröber, 1937, hasta ahora solo conocido para Argentina, Chile y Uruguay, es reportado por primera vez para Perú con base en la descripción de una especie nueva, *Heteromphrale illapa* sp. nov. de Moquegua. Además, se proporciona una actualización de la clave de identificación para las especies conocidas, así como un mapa de distribución.

Publicación registrada en Zoobank/ZooBank article registered:

LSIDurn:lsid:zoobank.org:pub:2381F844-1F44-4AEE-8032-5F6D4199333C

Acto nomenclatural/nomenclatural act:

Heteromphrale illapa Sánchez & Ramírez-Montano, 2023

LSIDurn:lsid:zoobank.org:act:546EC70C-0FAA-403F-89A0-4D673E5BF0E4

Keywords:

Asiloidea, coastal desert, diversity, neotropical, taxonomy, window flies

Palabras claves:

Asiloidea, desierto costero, diversidad, neotropical, taxonomía, moscas de ventana.

Introduction

Window flies (Diptera: Scenopinidae) are a cosmopolitan family of asiloid flies comprising over 420 known species distributed in 25 genera worldwide, several of which have significant continental endemism (Winterton & Gaimari 2011, Winterton & Ware 2015). Three subfamilies are recognized, Caenotinae (one genus), Proratinae (six genera), and Scenopininae (18 genera), the latter with five endemic genera belonging to the New World, *Belosta* Hardy, *Brevitrichia* Hardy, 1944, *Heteromphrale* Kröber, 1937, *Irwiniana* Kelsey, 1971 and *Pseudatrichia* Osten Sacken, 1877 (Kelsey 1973, Winterton & Gaimari 2017).

In the Neotropical region, seven genera are found containing only 24 species: *Brevitrichia*, *Irwiniana*, *Jackhallia* Nagatomi & Liu, 1994, *Pseudatrichia*, *Heteromphrale*, *Metatrichia* Coquillett, 1900 and *Scenopinus* Latreille, 1802 (Winterton & Gaimari 2017, Rafael et al. 2022). Many more species are expected to be discovered in this region as many countries remain poorly sampled for most dipteran groups, like Peru where only one species is known to occur, *Scenopinus magnicornis* (Kröber, 1913) (Kelsey 1969, 1973, Amorim 2009).

Heteromphrale is a Neotropical genus known from Argentina, Chile, and Uruguay, comprising three extant species: *Heteromphrale blanca* (Edwards, 1932), *Heteromphrale chilensis* (Kröber, 1937), and *Heteromphrale cyanops* Winterton & Gaimari, 2011 (Winterton & Gaimari 2011). This genus can be differentiated from *Brevitrichia* (the closest related genus) by the relatively short and straight distiphallus and subepandrial sclerite not modified, and the straight or slightly emarginate apically sternite 8 in females (Winterton & Gaimari 2011, Winterton & Gharali 2011). In this work, we report *Heteromphrale* for the first time from Peru and describe a new species, increasing the number of species in this genus to four. A distribution map and an updated key to species of *Heteromphrale* are provided.

Material and methods

Specimens included in this work are deposited in the entomological collection of the Natural History Museum, Universidad Nacional Mayor de San Marcos, Lima, Peru (MUSM). Digital images of specimens were taken with a Leica MC 190 HD digital camera mounted on a Leica SAPO stereoscopic microscope, and then integrated as single images with Zerene stacker software (Zerene Systems LLC).

The genitalia were briefly heated in 10 % KOH to remove soft tissue, then rinsed in distilled water, treated with 10 % acetic acid, and examined in concavity slides with glycerin. Lastly, the detached parts were stored in polyethylene microvials with glycerin for preservation and pinned with their respective specimens. Morphological terminology follows Winterton and Gaimari (2011), and like these authors structures of the male terminalia (rotated 180° in Scenopininae) are described and labeled as they are in related flies with terminalia not rotated (i.e., the ventral apodeme of the aedeagus is physically located dorsally).

The type data are transcribed in full, forward slashes separate different labels from the same specimen and square brackets enclose complementary or explanatory information not included in labels. Distribution maps were elaborated with SimpleMapper (Shorthouse 2010).

TAXONOMY AND DESCRIPTIONS

HETEROMPHRALE KRÖBER, 1937

Heteromphrale illapa sp. nov.

(Figs. 1 – 2)

Material examined. Holotype: ♂, PERU: MO [Moquegua], Ilo, El Algarrobal, 17°34'45.85"S, 71°9'42.41"W, 768 m, 25.ii.2023, G, Saravia [Moericke trap] / HOLOTYPE ♂ *Heteromphrale illapa* Sánchez & Ramírez-Montano (MUSM). Paratypes. 2♀, same data as holotype / PARATYPE ♀ *Heteromphrale illapa* Sánchez & Ramírez-Montano (MUSM).

Distribution. Moquegua, Peru. The type locality is located in the coastal desert of southwestern Peru.

Holotype condition. Good, detached terminalia stored in glycerine and pinned along with specimen.

Diagnosis. Antenna dark brown, flagellum abruptly pear-shaped; mouthparts smaller than oral cavity; scutum without glabrous dorsocentral patches, but female presents a glabrous and glossy central stripe on anterior half; wing with vein R_4 diverging from R_5 at point in basal quarter of cell r_5 (anterior to apex of discal medial cell); abdomen dark brown with light brown (male) to yellow (female) posterior bands on tergites 2–5, more extensive and conspicuous in female; tergite 2 sensory patch distinct as two small patches; male epandrium with posterior margin rounded; hypandrium small with a single lobe; distiphallus arms divergent; lateral aedeagal bulbs relatively small; female sternite 8 posteriorly attenuate, more or less pointed; acanthophorite spines long and stout.

Description of male holotype. (Fig. 1 a–b) Body length: 2.5 mm, wing length: 1.6 mm

Head. (Fig. 1c) Brownish yellow, except narrow line along eye margin on upper frons and ocellar triangle, dark brown; eyes contiguous, separated at vertex by a little more than width of ocellar triangle; ocellar triangle gray pubescent, raised, with anterior ocellus slightly larger than posterior ones; scape and pedicel dark brown, the latter with minute pale setae apically; flagellum dark brown to black, abruptly pyriform, tapered on about distal half; mouthparts relatively small in size, smaller than oral cavity, brownish yellow except basally, darkened.

Thorax. Scutum black, brownish yellow on apical margin of postpronotal lobe, anterior part of scutum adjacent to postpronotal lobe, lateral margin of scutum and postalar callus; predominantly overlain by dense glaucous pubescence and sparse dorsocentral and acrostichal pale setae; scutellum black medially, yellowish on lateral margins and brownish on posterior margin; pleura mainly brown to black, except on upper margin, yellowish; coxae and legs brown, white setose. **Wing.** Venation pale brown; vein R_4 diverging from R_5 at point in basal quarter of cell r_5 (anterior to apex of discal medial cell); haltere stem yellow, knob white. **Abdomen.** Segments dark brown with posterior light brown bands that stand out little from the background; pale setae laterally, very few on posterior margins of tergites; tergite 2 sensory patch large and distinct, dark brown concolorous with anterior band. **Terminalia.** (Fig. 1 d–g). Epandrium yellowish brown, subrectangular with posterior margin rounded, white setae marginally; hypandrium halves small, subconical and encircling a single rounded lobe; dorsal process of gonocoxite acuminate; gonostylus large, apparently fused to gonocoxite, extending little beyond to the apex of distiphallus and medially united; gonocoxal apodeme more or less pointed, flattened dorsoventrally, gently directed inwards (outer margin curved, inner margin nearly straight); ejaculatory apodeme small, narrow in lateral view and directed downwards (physically upwards); lateral aedeagal bulbs small; ventral apodeme dark sclerotized; distiphallus divergent laterally and gently curved downwards around gonostylus; subepandrial sclerite, curved on second third, apex spatulate and rounded.

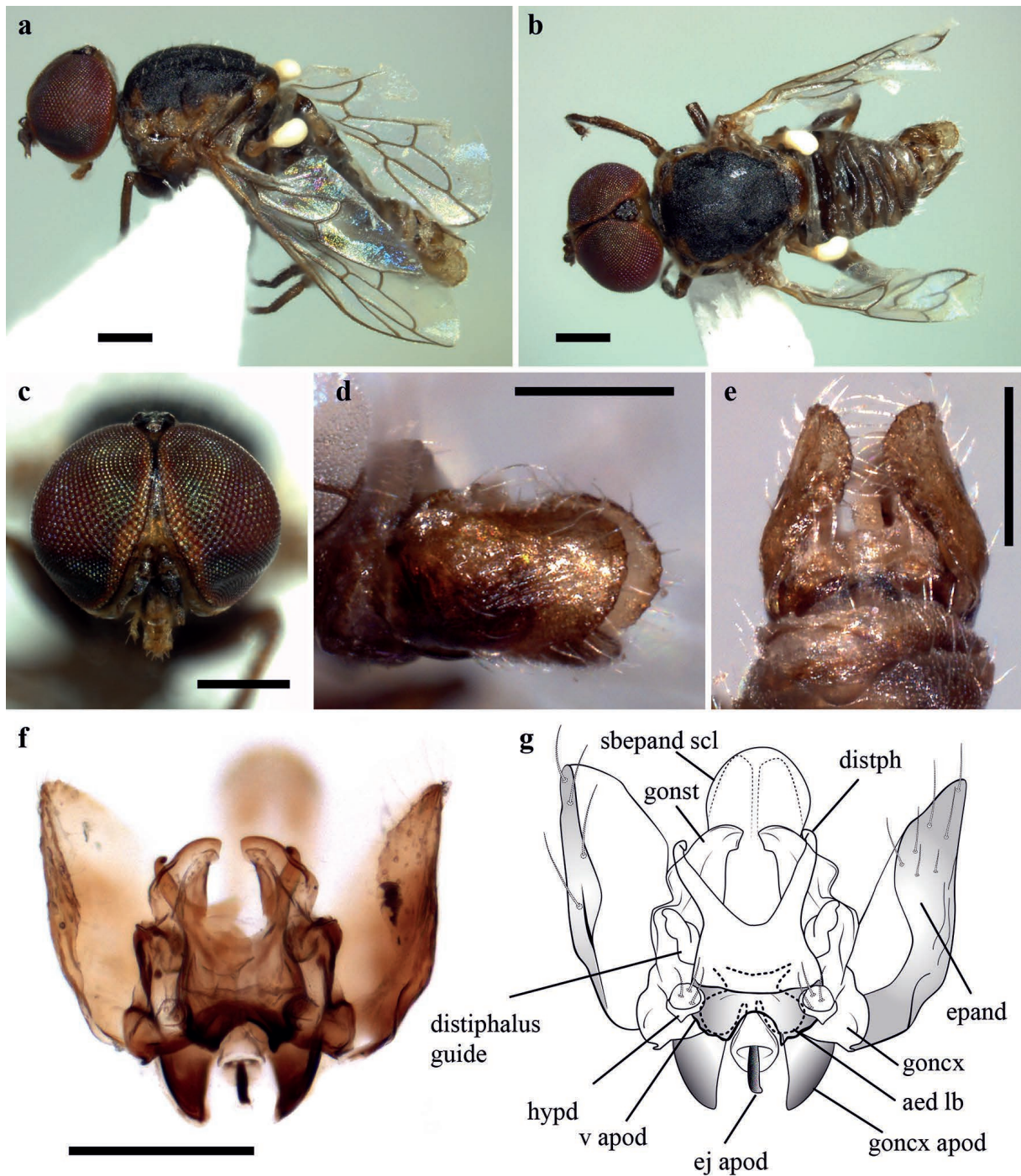


Figure 1. *Heteromphrale illapa* sp. nov. Male. a – b. Habitus, lateral and dorsal views, c. head, frontal view, d – e. Terminalia, lateral and ventral (physically dorsal) views, f – g. Terminalia after treatment with KOH, ventral view. Abbreviations. aed lb – aedeagal lobe; distph – distiphallus; ej apod – ejaculatory apodeme; epand – epandrium; goncx – gonocoxite; goncx apod – gonocoxal apodeme; gonst – gonostylus; hypd – hypandrium; sbepand scl – subepandrial sclerite; v apod – ventral apodeme of parameral sheath. Scale bar = 0.25 mm.

Female. (Fig. 2 a–b) Body length: 4.5 mm, wing length: 2.8 mm.

Larger than male, differing from this by the following: **Head.** (Fig. 2c). Almost entirely cream yellow, except ocellar triangle, dark brown and upper frons and upper occiput with tan suffusion on sides; eyes dichoptic, separated at vertex by about twice the width of ocellar tubercle; frons furrowed medially, dividing it in two protruding glabrous areas; mouthparts yellow. **Thorax.** Scutum black to gray and cream yellow, yellow color more extensive

than in male, especially on postpronotal lobe (with only a black spot basally) and posterior third of scutum, as two narrow dorsocentral stripes; thorax overlain with dense glaucous pubescence and pale setae except by a glabrous and glossy central stripe on anterior half of scutum; scutellum black medially, cream yellow on lateral margins and brownish on posterior margin; pleura cream yellow with black spots on the lower part of anepimeron and upper part of katepisternum and meron; prosternum yellow; coxae yellow, with brown suffusion; legs yellow with mottled brown suffusion on femora and tibiae, tarsi darkened

apically. **Wing.** Haltere pale yellow. **Abdomen.** Posterior bands of abdominal segments cream yellow, more extensive than in male and clearly standing out from the background. **Terminalia.** (Fig. 2 d–i). Sternite 8 posteriorly attenuate, more or less pointed; acanthophorite spines long and stout; two sclerotized spermathecae, bean-shaped, located basally in abdominal segment 6; genital fork sclerotized, connected posteromedially with “Y” shaped sclerotized bridge between genital fork and anterior margins of tergites 9 and 10.

Etymology. The specific epithet is a masculine noun in apposition. Illapa was the Inca god of thunder, lightning and rain.

Taxonomic discussion. The most similar species to *H. illapa* sp. nov. is *H. chilensis*. Externally, both species share the mouthparts smaller than oral cavity and the basal antennal flagellomere abruptly pear-shaped. In addition, a more evident relation can be observed in the

male genitalia, very similar, especially in the distiphallus, which presents arms divergent laterally, while in the other two species of *Heteromphrale* it presents parallel arms. However, *H. illapa* sp. nov. can be easily differentiated from *H. chilensis* because this latter species presents the abdomen distinctly matte white and its female has the frons extensively pilose, while in *H. illapa* sp. nov. the abdomen is more extensively brown and the female frons lacks pile. Additionally, in *H. chilensis* the scutum of both sexes presents glabrous and glossy dorsocentral areas posteriorly (circular in male, linear in female), something that can only be observed in the female of *H. illapa* sp. nov., although it presents a single linear glossy area of central position on the anterior half of the scutum. On the other hand, regarding the male genitalia, the most significant difference can be observed in the hypandrium halves, with a single lobe in *H. illapa* sp. nov. (Fig. 1f–g) and multiple lobes in *H. chilensis*.

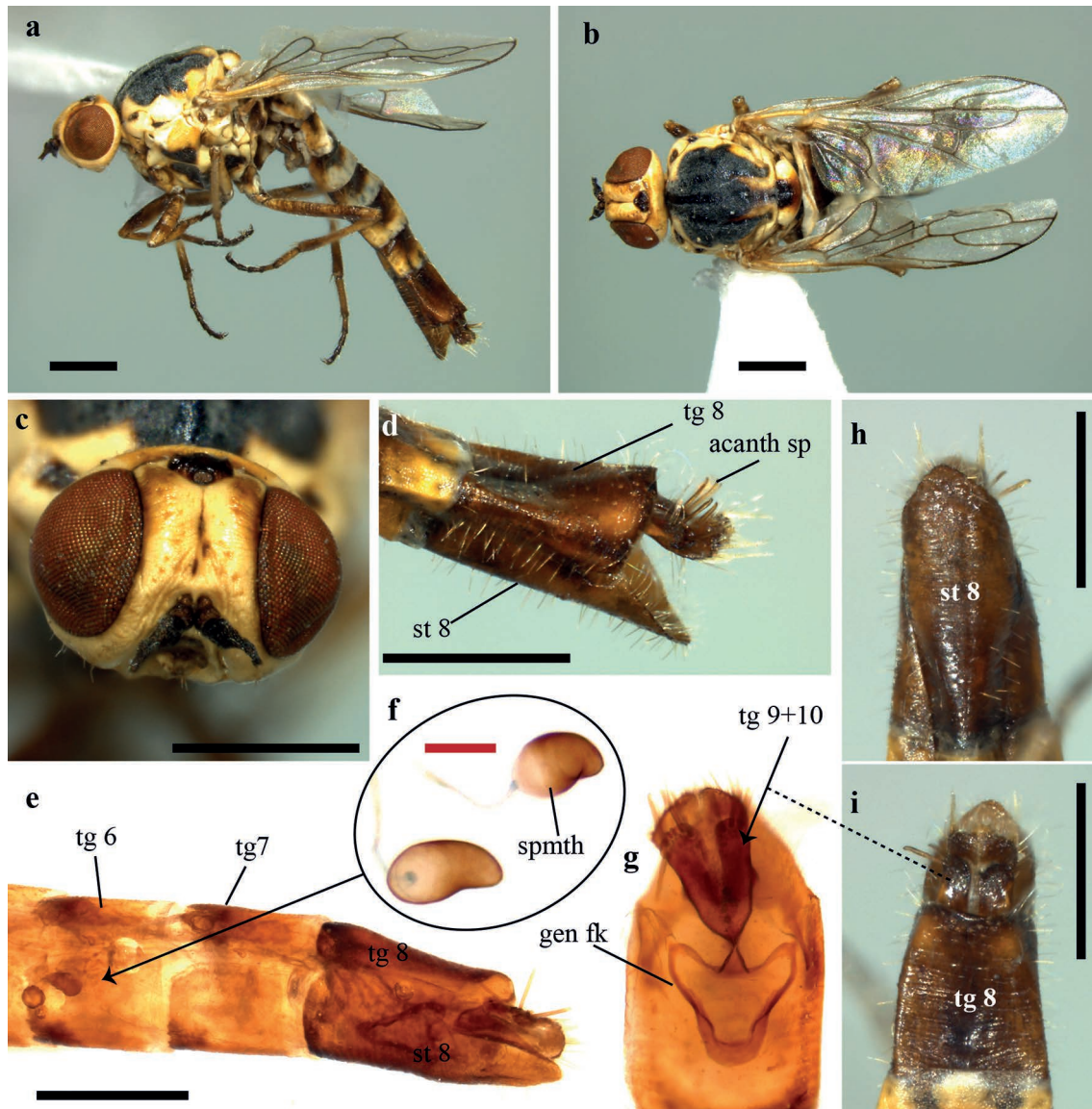


Figure 2. *Heteromphrale illapa* sp. nov. Female. a – b. Habitus, lateral and dorsal views, c. head, frontal view, d. Terminalia, lateral view, e – f. Terminalia after treatment with KOH, lateral and ventral views (Showing positions of spermathecae and genital fork). h – i. Terminalia, ventral and dorsal views. Abbreviations. acanth sp – acanthophorite spines; gen fk – genital fork; spmth – spermatheca; st – sternite; tg – tergite. Scale bars; black = 0.5 mm, red = 0.1 mm.



Figure 3. Distribution of *Heteromphrale* species.

Key to *Heteromphrale* species (Modified from Winterton and Gaimari, 2011)

1 Scutum with glabrous, glossy area (at least in female) (Fig. 2b and Fig. 5C, D in Winterton & Gaimari 2011); basal antennal flagellomere abruptly pear-shaped; mouthparts smaller than oral cavity; legs, at least in female, with mottled brown suffusion; distiphallus with arms divergent laterally (Fig. 1g); lateral aedeagal bulbs relatively small

2

– Scutum with uniform covering of pubescence, lacking a glabrous or glossy mark; basal antennal flagellomere more conical-shaped, tapering evenly; mouthparts usually normal-sized, nearly filling oral cavity; legs, if brown suffusion present, not mottled; distiphallus with arms parallel; lateral aedeagal bulbs large

3

2 Female frons with extensive pile, abdomen distinctly matte white with brown suffusion laterally and ventrally; hypandrium with multiple lobes directed posteromedially; female sternite 8 rounded posteriorly

H. chilensis (Kröber) (Chile)

– Female frons without pile; abdomen in both sexes more extensively brown; hypandrium with a single lobe directed posteromedially; female sternite 8 pointed posteriorly

H. illapa sp. nov. (Peru)

3 Wing with vein R_4 diverging from vein R_5 at point in basal quarter of cell r_5 (anterior to apex of discal medial cell) (See Fig. 8B in Winterton & Gaimari 2011); tergite 2 sensory patch as relatively small single patch, slightly narrowed; male epandrium enlarged, bulbous, without distal fringe of long, white setae on posterior edge (See Figs. 3A–B, 8A, 10C in Winterton & Gaimari 2011); female sternite 8 shallowly emarginate posteriorly and without a fringe of long setae; acanthophorite spines stout (See Fig. 9G–H in Winterton & Gaimari 2011)

H. cyanops (Edwards) (Argentina and Uruguay)

– Wing with vein R_4 diverging from vein R_5 at point between one-quarter and one-half of cell r_5 (posterior to apex of discal medial cell) (See Fig. 6 A, B in Winterton & Gaimari 2011); tergite 2 sensory patch large and distinct, divided into two small patches with setae directed medially; male epandrium not bulbous, size subequal to preceding abdominal segment, with distal fringe of long white setae on posterior edge (See Figs. 2A–B, 10A in Winterton & Gaimari 2011); female sternite 8 distally rounded with dense long thin setae apicolaterally and distally; acanthophorite spines thin and wispy (See Fig. 9A–C in Winterton & Gaimari 2011)

H. blanca Winterton & Gaimari (Argentina)

Discussion

The 25 species of known scenopinids in the Neotropical region represent only 6% of the world extant fauna, something that reflects the poor knowledge of dipterans inhabiting this region that includes some countries where very little is known for most part of their territories, like Peru (Amorim 2009). Hence, although the Peruvian fauna of window flies cannot be expected to be large, the small number of species known to occur in this country certainly underestimate its actual diversity, which represents a challenging issue due to the small size of the members of this group that are usually overlooked in faunistic studies and whose material is relatively rare in collections.

Literature cited

- Amorim DS. 2009. Chapter Three Neotropical Diptera Diversity: Richness, Patterns, and Perspectives. In: Bickel D, Pape T, Meier R. (Eds). *Diptera Diversity: Status, Challenges and Tools*. Leiden, Koninklijke Brill. 459 p. <https://doi.org/10.1163/ej.9789004148970.1-459.17>
- Kelsey LP. 1969. A revision of the Scenopinidae (Diptera) of the world. *Bulletin of the United States National Museum*, 277: 1-336. <https://doi.org/10.5962/bhl.title.16405>
- Kelsey LP. 1973. The Zoogeographic Distribution of Known Scenopinidae. *Entomological News*, 84: 329-332.
- Rafael JA, Ale-Rocha R, Limeira-de-Oliveira F. 2022. Insect (Hexapoda) Diversity in the Oceanic Archipelago of Fernando de Noronha, Brazil: Scenopinidae (Diptera). *Biota Neotropica*, 22(2): e20211282. <https://doi.org/10.1590/1676-0611-bn-2021-1282>
- Shorthouse DP. 2010. SimpleMappr, an online tool to produce publication-quality point maps. Accessed 2023 Aug 14. <https://www.simplemappr.net>
- Winterton SL, Gaimari SD. 2011. Revision of the South American window fly genus *Heteromphrale* Kröber, 1937 (Diptera, Scenopinidae). *ZooKeys*, 84: 39-57. <https://doi.org/10.3897/zookeys.84.774>
- Winterton SL, Gaimari SD. 2017. Scenopinidae (window flies). In: Kirk-Spriggs AH, Sinclair BJ, editors. *Manual of Afrotropical Diptera*. Vol. 2. Nematocerous Diptera and lower Brachycera. Suricata 5. SANBI Graphics & Editing, Pretoria, 1209-1219.
- Winterton SL, Gharali B. 2011. *Iranotrichia* gen. n., a new genus of Scenopinidae (Diptera) from Iran, with a key to window fly genera of the world. *ZooKeys*, 138: 75-92. <https://doi.org/10.3897/zookeys.138.1821>
- Winterton SL, Ware JL. 2015. Phylogeny, divergence times and biogeography of window flies (Scenopinidae) and the therevoid clade (Diptera: Asiloidea). *Systematic Entomology*, 40(3), 491-519. <https://doi.org/10.1111/syen.12117>

Agradecimientos / Acknowledgments:

The authors thank the journal reviewers for their suggestions to improve this manuscript.

Conflicto de intereses / Competing interests:

The authors declare no conflict of interest.

Rol de los autores / Authors Roles:

PS. Investigación; Curación de Datos; Escritura- Preparación del borrador original; Conceptualización.

LFR-M. Investigación; Curación de Datos; Escritura- Preparación del borrador original; Conceptualización.

Fuentes de financiamiento / Funding:

The authors declare, this work not received specific funding.

Aspectos éticos / legales; Ethics / legals:

The specimens included in this work were collected under permit N° AUT-EP-2023-056 issued by the Servicio Nacional Forestal y de Fauna Silvestre- SERFOR. Authors declare that they did not violate or omit ethical or legal norms in this research.